

Rosefield Solar Farm

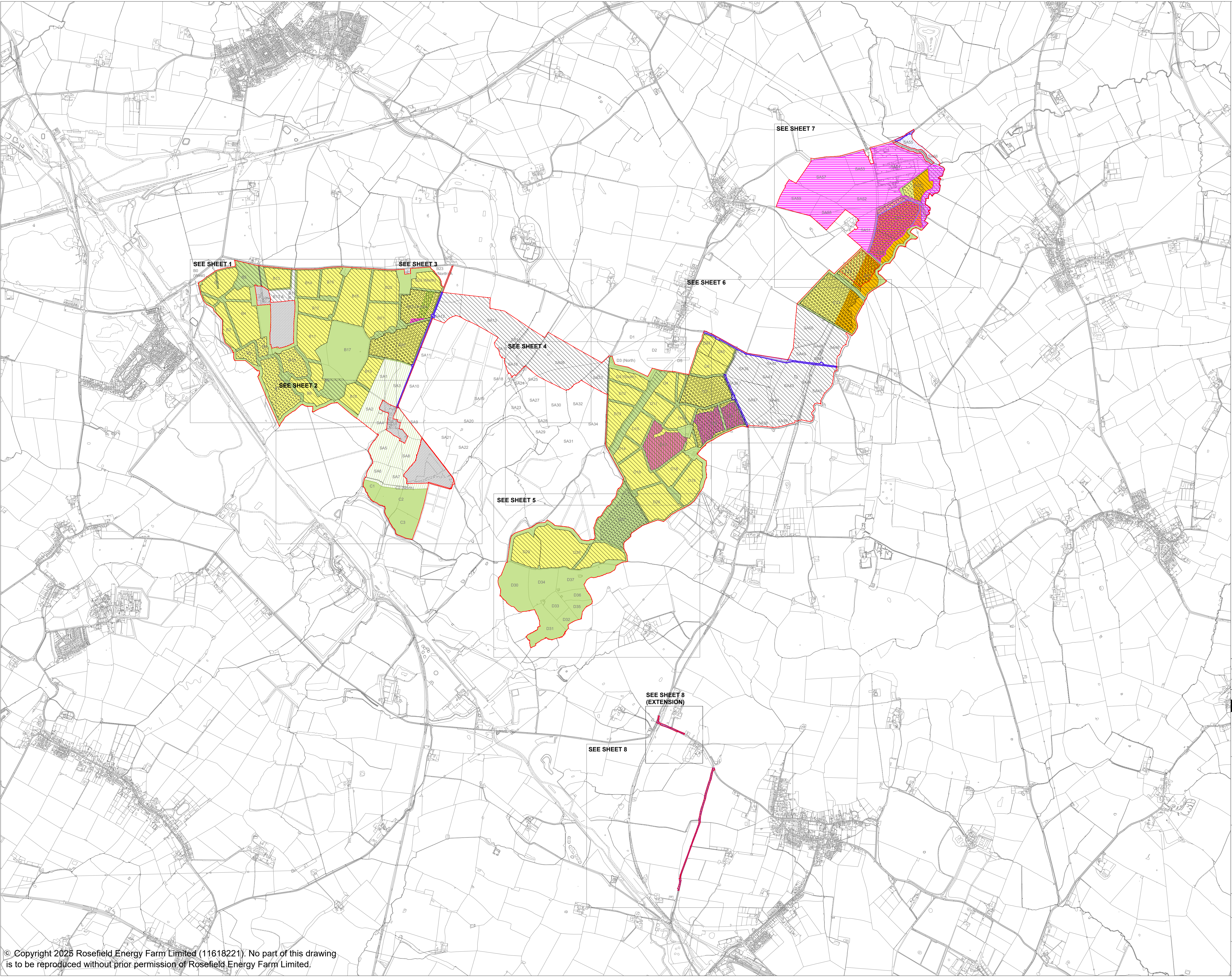
Works Plans

APFP Regulation Reg 5(2)(i)
Planning Act 2008
Infrastructure Planning
(Applications: Prescribed Forms
and Procedure) Regulations 2009
EN010158/APP/2.3
September 2025
Rosefield Energyfarm Limited



2.3 Works Plans

Drawing number	Revision number	Drawing title	Scale
2.3	01	Works Plans – Key Plan	1:15,000 (Key Plan) @ A1
2.3	01	Works Plans – Sheet 1 of 8	1:2,500 (Key Plan) @ A1
2.3	01	Works Plans – Sheet 2 of 8	1:2,500 (Key Plan) @ A1
2.3	01	Works Plans – Sheet 3 of 8	1:2,500 (Key Plan) @ A1
2.3	01	Works Plans – Sheet 4 of 8	1:2,500 (Key Plan) @ A1
2.3	01	Works Plans – Sheet 5 of 8	1:2,500 (Key Plan) @ A1
2.3	01	Works Plans – Sheet 6 of 8	1:2,500 (Key Plan) @ A1
2.3	01	Works Plans – Sheet 7 of 8	1:2,500 (Key Plan) @ A1
2.3	01	Works Plans – Sheet 8 of 8	1:2,500 (Key Plan) @ A1



LEGEND:

Order Limits

Areas outside the Order Limits

Work No. 1
Ground-mounted Solar PV Generating Station
(Up to 3.5m)

Work No. 1
Ground-mounted Solar PV Generating Station
(Up to 4.5m. Accounting for Flood Areas)

Work No. 2A
Rosefield Substation Compound

Work No. 2B
Abnormal Indivisible Load Corridor

Work No. 3A
Satellite Collector Compounds

Work No. 3B
Satellite Collector Compound Transformer

Work No. 4
Battery Energy Storage System (BESS)

Work No. 5
Main Collector Compound

Work No. 6
Grid Connection Cabling Corridor

Work No. 7
Interconnecting Cabling Corridor (s)

Work No. 8A
Primary Temporary Construction and
Decommissioning Compounds

Work No. 8B
Secondary Temporary Construction and
Decommissioning Compounds

Work No. 9
Highway Works

Work No. 10A
Green and Blue Infrastructure

Work No. 10B
Internal access to mitigation areas only

NOTES:

- Ordnance Survey (OS) MasterMap data adopted as the drawing base map.
- The location of features shown are indicative only. Exact locations to be confirmed on site.
- Additional features may be present on site that have not been identified on the OS MasterMap data.
- The Works Plans show the spatial extent of the authorised development, which are described in Schedule 1 (Authorised Development) to the draft Development Consent Order. The Works Plans should be read in conjunction with the draft Development Consent Order and other plans and documents to be certified by it.
- The Works Plans are drawn to OS MasterMap data and Land Registry boundaries. In some locations the Land Registry boundaries differ from the OS MasterMap data which results in Limits of Deviation and/or the Order Limits not aligning with the line work shown on the base map.
- The Works Plans show some works taking place in combination with each other on the same area of land. Within the combined Limits of Deviation for these works the Applicant seeks authorisation for any combination of those Work Nos. shown within that Limit of Deviation (including on insets).
- Where the Order Limits overlap with works, it is assumed that the spatial extent of works extends to the outer edge of the Order Limits.

01	SEPT 2025	DICO SUBMISSION	LDA	LDA	EDF
REVISION	DATE	DESCRIPTION	DRAWN	CHECKED	APPROVED

Rosefield Solar Farm

DOCUMENT:
APPLICATION DRAWINGS
FOR APPROVAL

REGULATION 5(2)(j)

DRAWING TITLE:
WORKS PLANS
KEY PLAN

PIN REFERENCE NUMBER:
EN010158/APP/2.3

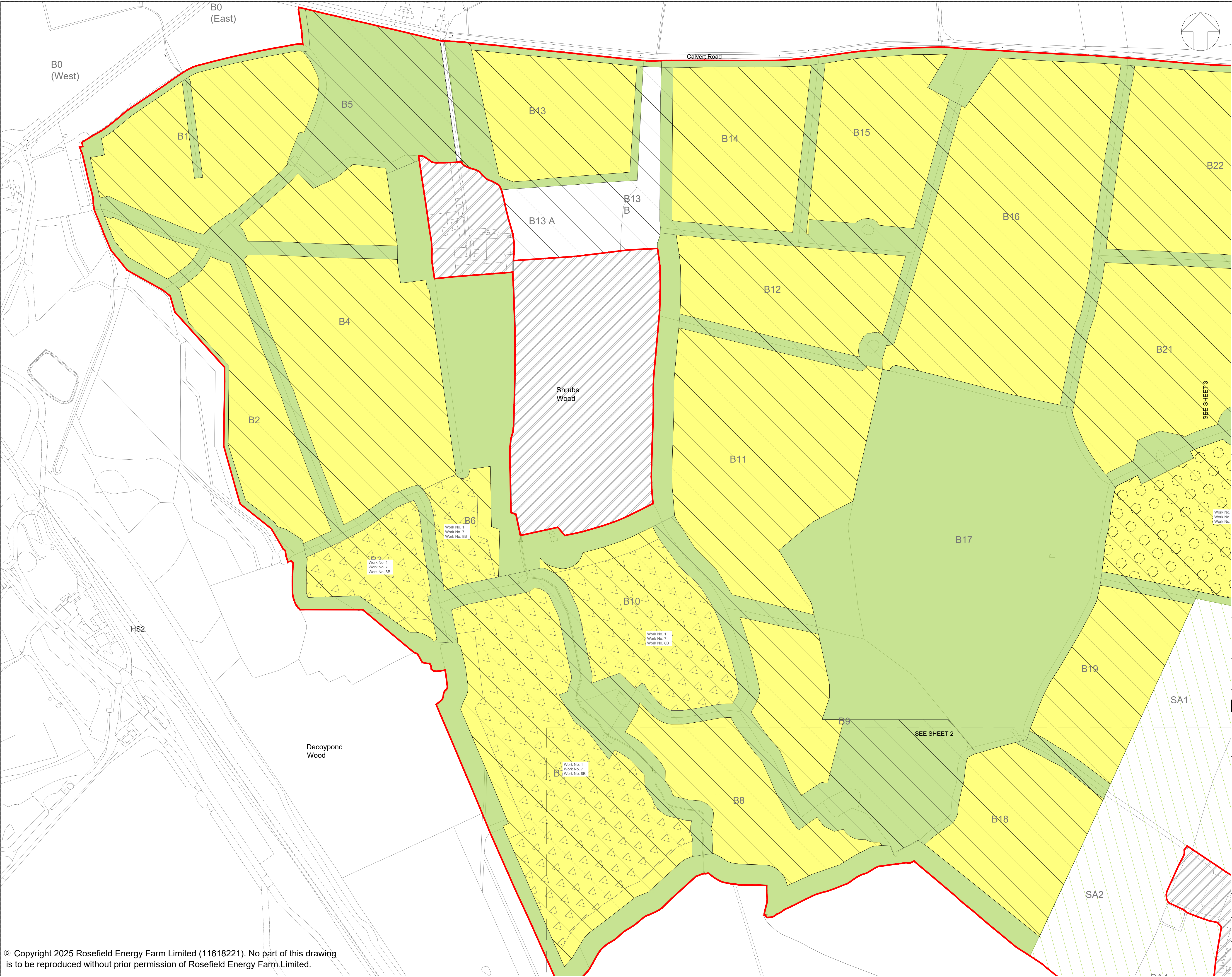
REVISION:
01

DATE:
SEPT 2025

DRAWN:
LDA

SCALE:
1:15,000 at A1

SCALE BAR:



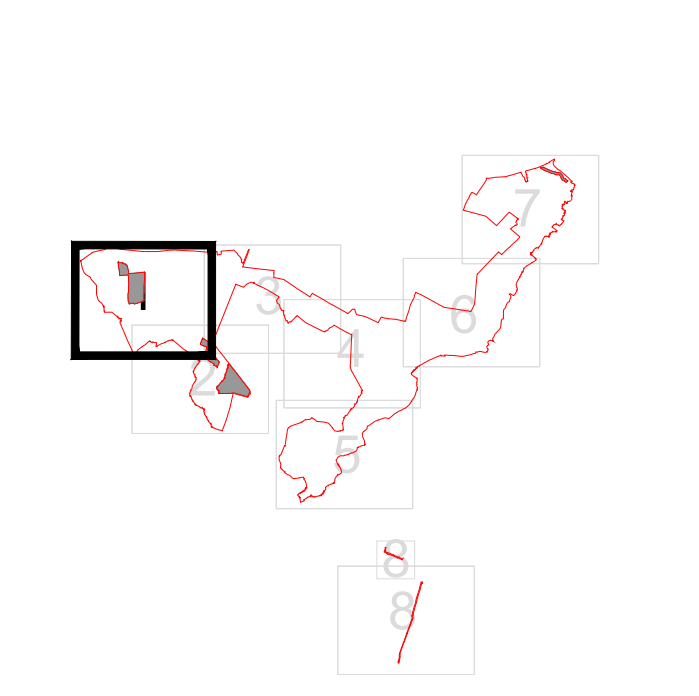
LEGEND:

- Order Limits
- Areas outside the Order Limits
- Work No. 1 Ground-mounted Solar PV Generating Station (Up to 3.5m)
- Work No. 1 Ground-mounted Solar PV Generating Station (Up to 4.5m. Accounting for Flood Areas)
- Work No. 2A Rosefield Substation Compound
- Work No. 2B Abnormal Indivisible Load Corridor
- Work No. 3A Satellite Collector Compounds
- Work No. 3B Satellite Collector Compound Transformer
- Work No. 4 Battery Energy Storage System (BESS)
- Work No. 5 Main Collector Compound
- Work No. 6 Grid Connection Cabling Corridor
- Work No. 7 Interconnecting Cabling Corridor (s)
- Work No. 8A Primary Temporary Construction and Decommissioning Compounds
- Work No. 8B Secondary Temporary Construction and Decommissioning Compounds
- Work No. 9 Highway Works
- Work No. 10A Green and Blue Infrastructure
- Work No. 10B Internal access to mitigation areas only

NOTES:

1. Refer to key plan for notes.

KEY PLAN:



REVISION	DATE	DESCRIPTION	DRAWN	CHECKED	APPROVED
01	SEPT 2025	DICO SUBMISSION	LDA	LDA	EDF

Rosefield Solar Farm



DOCUMENT:
**APPLICATION DRAWINGS
FOR APPROVAL**

REGULATION 5(2)(j)

DRAWING TITLE:
**WORKS PLANS
SHEET 1 OF 8**

PIN REFERENCE NUMBER:
EN010158/APP/2.3

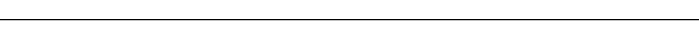
REVISION:
01

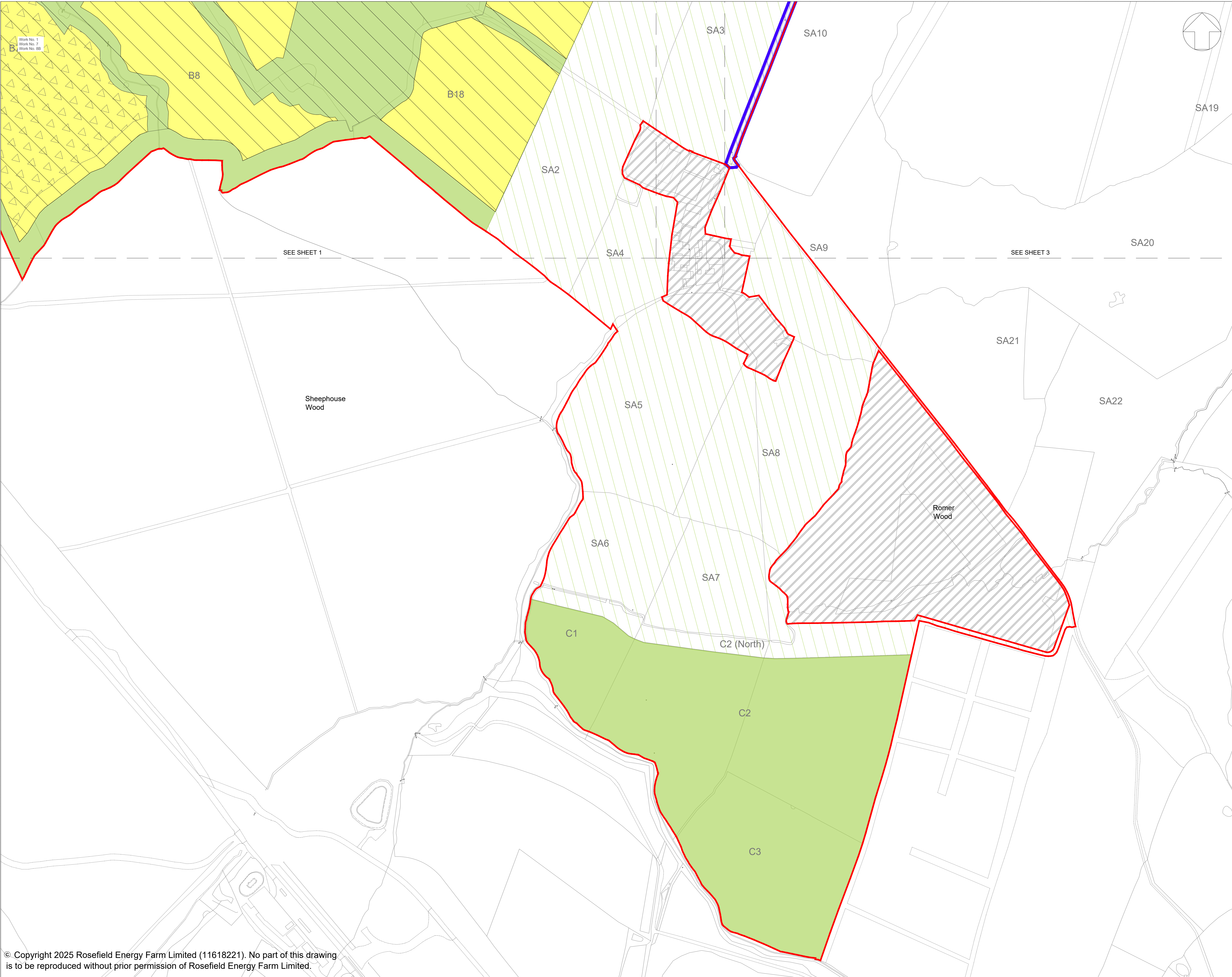
DATE:
SEPT 2025

DRAWN:
LDA

SCALE:
1:2,500 at A1

SCALE BAR:





LEGEND:

- Order Limits
- Areas outside the Order Limits
- Work No. 1 Ground-mounted Solar PV Generating Station (Up to 3.5m)
- Work No. 1 Ground-mounted Solar PV Generating Station (Up to 4.5m. Accounting for Flood Areas)
- Work No. 2A Rosefield Substation Compound
- Work No. 2B Abnormal Indivisible Load Corridor
- Work No. 3A Satellite Collector Compounds
- Work No. 3B Satellite Collector Compound Transformer
- Work No. 4 Battery Energy Storage System (BESS)
- Work No. 5 Main Collector Compound
- Work No. 6 Grid Connection Cabling Corridor
- Work No. 7 Interconnecting Cabling Corridor (s)
- Work No. 8A Primary Temporary Construction and Decommissioning Compounds
- Work No. 8B Secondary Temporary Construction and Decommissioning Compounds
- Work No. 9 Highway Works
- Work No. 10A Green and Blue Infrastructure
- Work No. 10B Internal access to mitigation areas only

NOTES:

1. Refer to key plan for notes.

KEY PLAN:

01	SEPT 2025	DICO SUBMISSION	LDA	LDA	EDF
REVISION	DATE	DESCRIPTION	DRAWN	CHECKED	APPROVED

Rosefield Solar Farm

DOCUMENT:
APPLICATION DRAWINGS FOR APPROVAL

REGULATION 5(2)(j)

DRAWING TITLE:
WORKS PLANS SHEET 2 OF 8

PIN REFERENCE NUMBER:
EN010158/APP/2.3

REVISION:
01

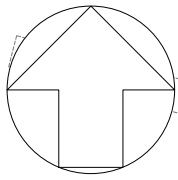
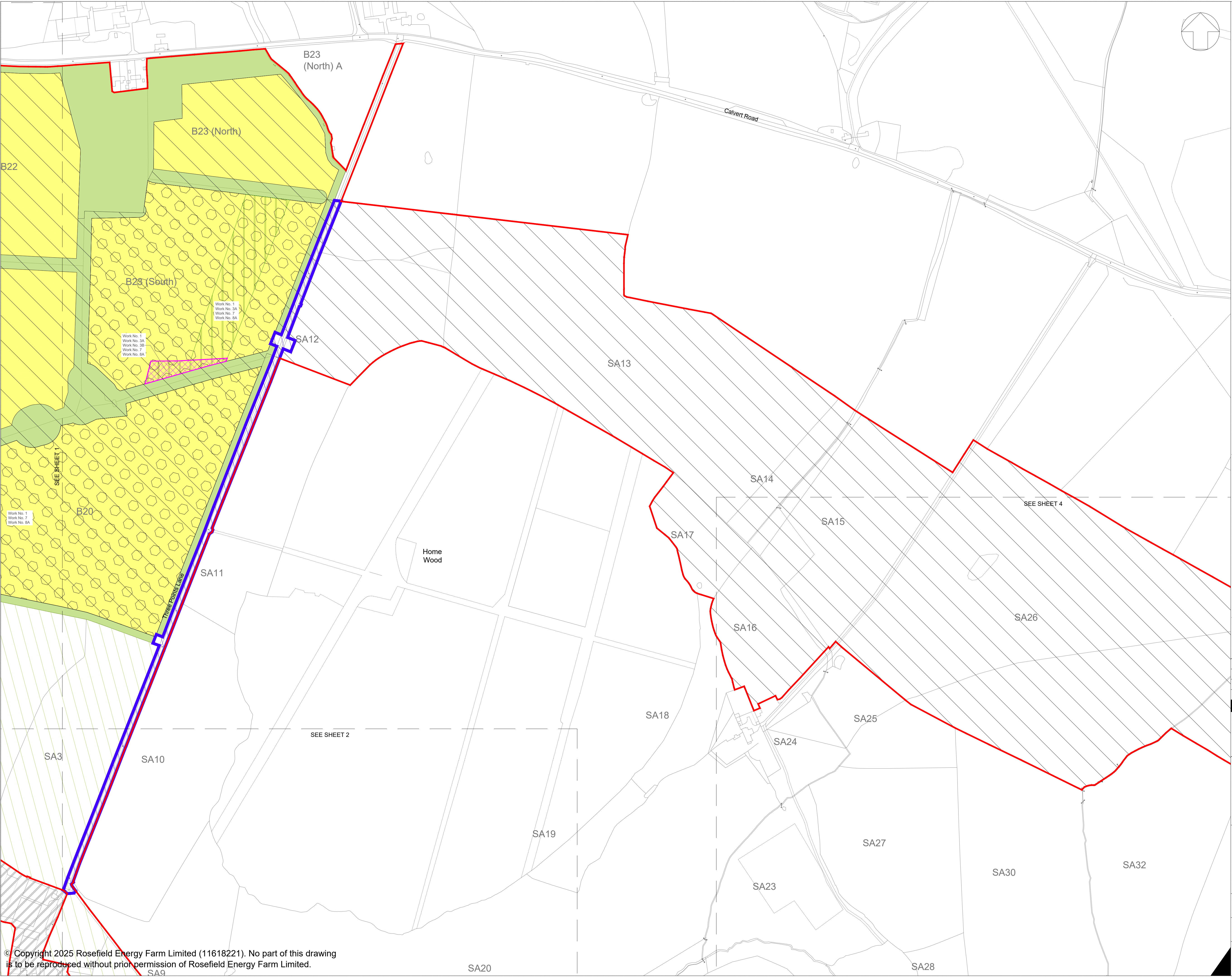
DATE:
SEPT 2025

DRAWN:
LDA

SCALE:
1:2,500 at A1

SCALE BAR:

© Copyright 2025 Rosefield Energy Farm Limited (11618221). No part of this drawing is to be reproduced without prior permission of Rosefield Energy Farm Limited.



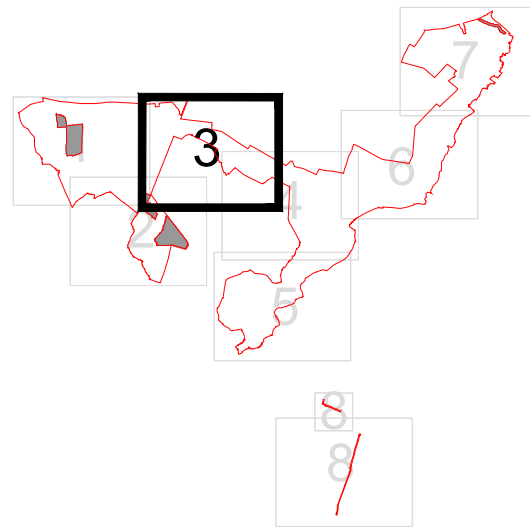
LEGEND:

- Order Limits
- Areas outside the Order Limits
- Work No. 1 Ground-mounted Solar PV Generating Station (Up to 3.5m)
- Work No. 1 Ground-mounted Solar PV Generating Station (Up to 4.5m. Accounting for Flood Areas)
- Work No. 2A Rosefield Substation Compound
- Work No. 2B Abnormal Indivisible Load Corridor
- Work No. 3A Satellite Collector Compounds
- Work No. 3B Satellite Collector Compound Transformer
- Work No. 4 Battery Energy Storage System (BESS)
- Work No. 5 Main Collector Compound
- Work No. 6 Grid Connection Cabling Corridor
- Work No. 7 Interconnecting Cabling Corridor (s)
- Work No. 8A Primary Temporary Construction and Decommissioning Compounds
- Work No. 8B Secondary Temporary Construction and Decommissioning Compounds
- Work No. 9 Highway Works
- Work No. 10A Green and Blue Infrastructure
- Work No. 10B Internal access to mitigation areas only

NOTES:

- Refer to key plan for notes.

KEY PLAN:



REVISION	DATE	DESCRIPTION	DRAWN	CHECKED	APPROVED
01	SEPT 2025	DICO SUBMISSION	LDA	LDA	EDF

Rosefield Solar Farm



DOCUMENT:
APPLICATION DRAWINGS
FOR APPROVAL

REGULATION 5(2)(j)

DRAWING TITLE:
WORKS PLANS
SHEET 3 OF 8

PIN REFERENCE NUMBER:
EN010158/APP/2.3

REVISION:
01

DATE:
SEPT 2025

DRAWN:
LDA

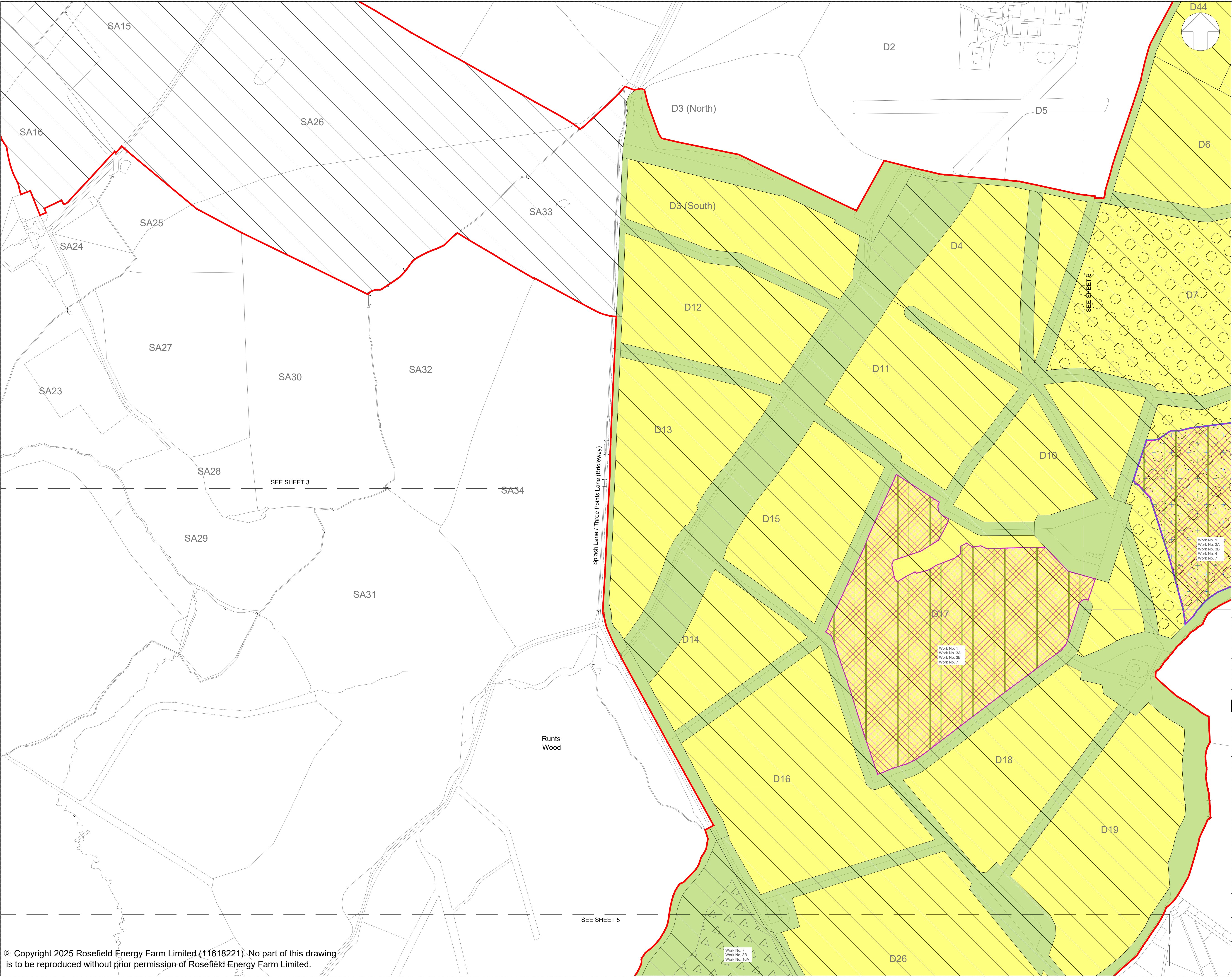
SCALE:
1:2,500 at A1

SCALE BAR:



© Copyright 2025 Rosefield Energy Farm Limited (11618221). No part of this drawing is to be reproduced without prior permission of Rosefield Energy Farm Limited.

This drawing may contain: Ordnance Survey material by permission of Ordnance Survey on behalf of the Controller of His Majesty's Stationery Office © Crown Copyright 2024. All rights reserved. Reference number 0100031673
OS Open data / © Natural England / © DEFRA / © DECC / © English Heritage. Aerial Photography - ESRI, DigitalGlobe, GEOEye, i-cubed, USDA FSA,USGD, AEX, Getmapping, Aerogrid, IGN,JGP,swisstopo, the GIS User Community



LEGEND:

- Order Limits
- Areas outside the Order Limits
- Work No. 1 Ground-mounted Solar PV Generating Station (Up to 3.5m)
- Work No. 1 Ground-mounted Solar PV Generating Station (Up to 4.5m. Accounting for Flood Areas)
- Work No. 2A Rosefield Substation Compound
- Work No. 2B Abnormal Indivisible Load Corridor
- Work No. 3A Satellite Collector Compounds
- Work No. 3B Satellite Collector Compound Transformer
- Work No. 4 Battery Energy Storage System (BESS)
- Work No. 5 Main Collector Compound
- Work No. 6 Grid Connection Cabling Corridor
- Work No. 7 Interconnecting Cabling Corridor (s)
- Work No. 8A Primary Temporary Construction and Decommissioning Compounds
- Work No. 8B Secondary Temporary Construction and Decommissioning Compounds
- Work No. 9 Highway Works
- Work No. 10A Green and Blue Infrastructure
- Work No. 10B Internal access to mitigation areas only

NOTES:

1. Refer to key plan for notes.

KEY PLAN:

01	SEPT 2025	DICO SUBMISSION	LDA	LDA	EDF
REVISION	DATE	DESCRIPTION	DRAWN	CHECKED	APPROVED

Rosefield Solar Farm

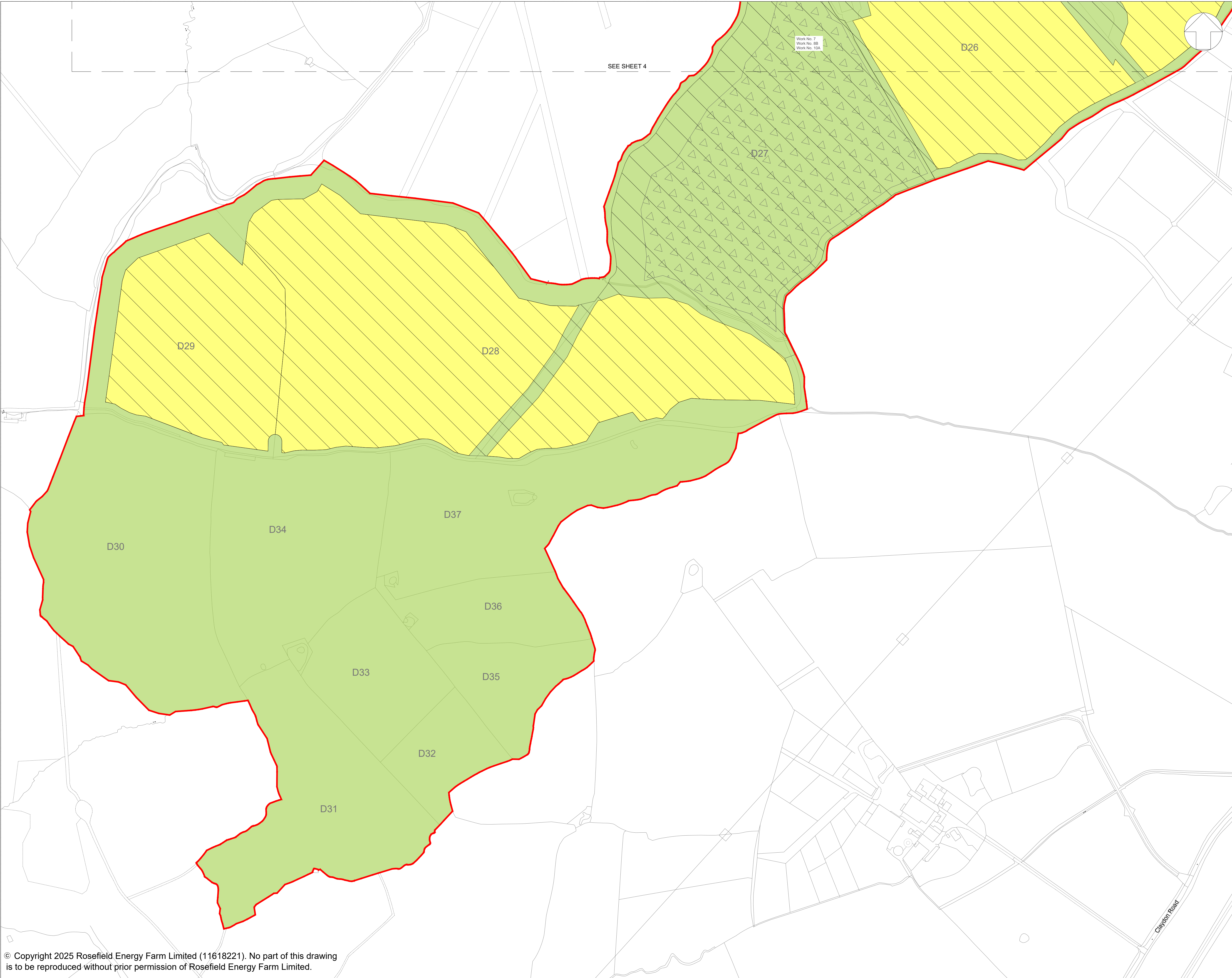
DOCUMENT:
APPLICATION DRAWINGS FOR APPROVAL

REGULATION 5(2)(j))

DRAWING TITLE:
WORKS PLANS SHEET 4 OF 8

PIN REFERENCE NUMBER: EN010158/APP/2.3	REVISION: 01	
DATE: SEPT 2025	DRAWN: LDA	SCALE: 1:2,500 at A1

SCALE BAR:



LEGEND:

- Order Limits
- Areas outside the Order Limits
- Work No. 1
Ground-mounted Solar PV Generating Station
(Up to 3.5m)
- Work No. 1
Ground-mounted Solar PV Generating Station
(Up to 4.5m. Accounting for Flood Areas)
- Work No. 2A
Rosefield Substation Compound
- Work No. 2B
Abnormal Indivisible Load Corridor
- Work No. 3A
Satellite Collector Compounds
- Work No. 3B
Satellite Collector Compound Transformer
- Work No. 4
Battery Energy Storage System (BESS)
- Work No. 5
Main Collector Compound
- Work No. 6
Grid Connection Cabling Corridor
- Work No. 7
Interconnecting Cabling Corridor (s)
- Work No. 8A
Primary Temporary Construction and
Decommissioning Compounds
- Work No. 8B
Secondary Temporary Construction and
Decommissioning Compounds
- Work No. 9
Highway Works
- Work No. 10A
Green and Blue Infrastructure
- Work No. 10B
Internal access to mitigation areas only

NOTES:

1. Refer to key plan for notes.

KEY PLAN:

01	SEPT 2025	DICO SUBMISSION	LDA	LDA	EDF	
REVISION	DATE	DESCRIPTION	DRAWN	CHECKED	APPROVED	

Rosefield Solar Farm

DOCUMENT:
**APPLICATION DRAWINGS
FOR APPROVAL**

REGULATION 5(2)(j)

DRAWING TITLE:
**WORKS PLANS
SHEET 5 OF 8**

PIN REFERENCE NUMBER:
EN010158/APP/2.3

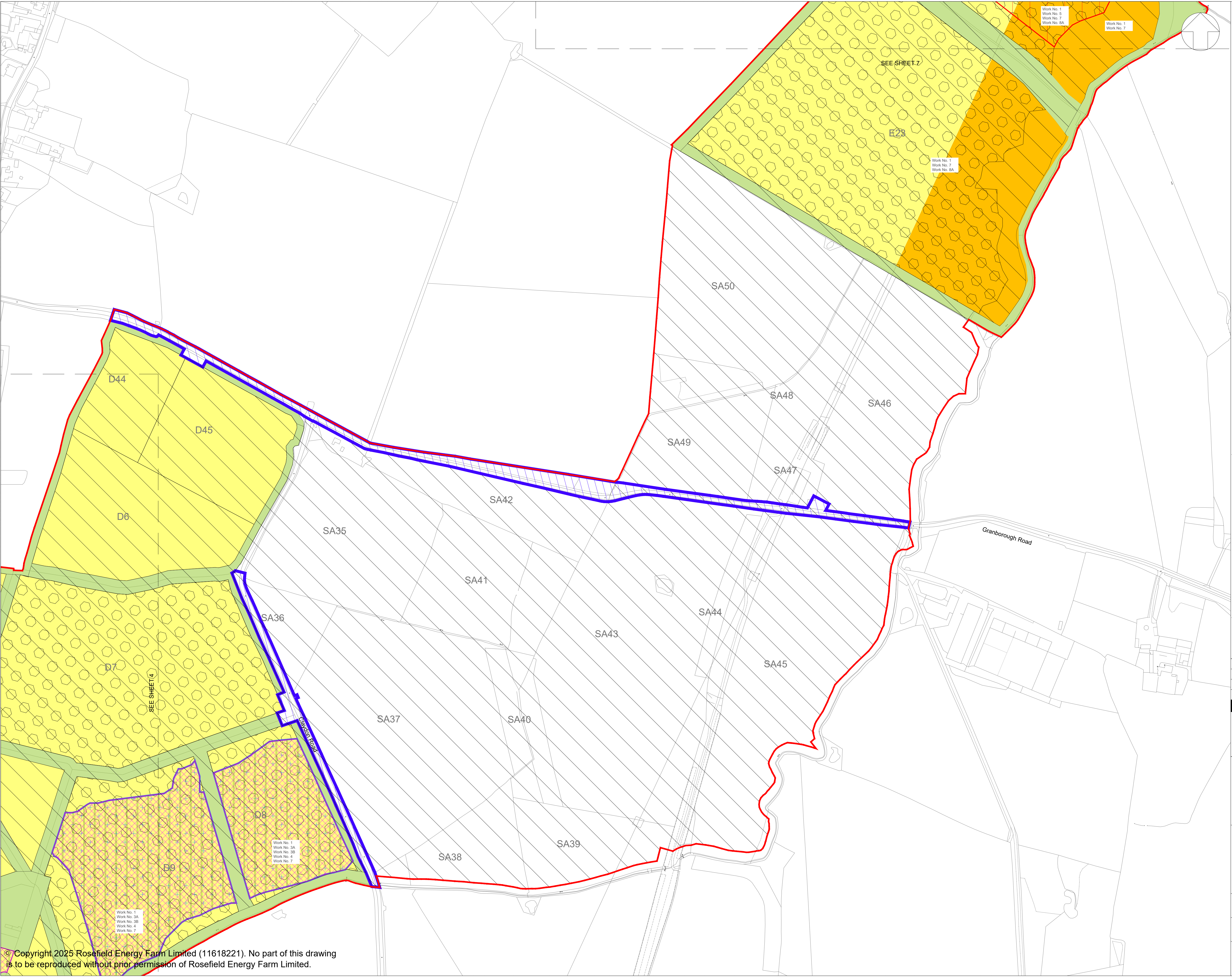
REVISION:
01

DATE:
SEPT 2025

DRAWN:
LDA

SCALE:
1:2,500 at A1

SCALE BAR:



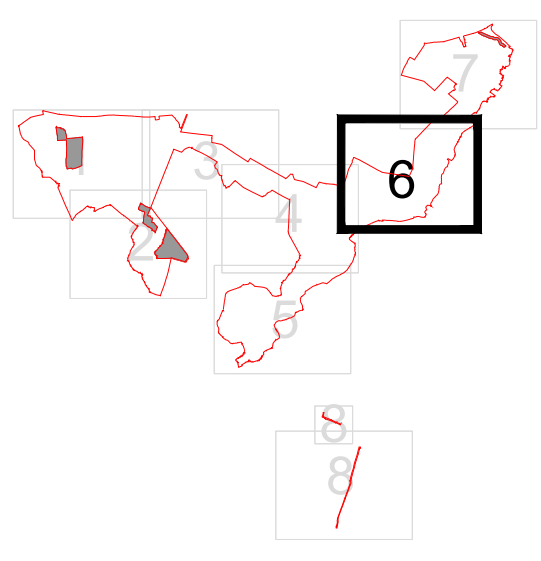
LEGEND:

- Order Limits
- Areas outside the Order Limits
- Work No. 1 Ground-mounted Solar PV Generating Station (Up to 3.5m)
- Work No. 1 Ground-mounted Solar PV Generating Station (Up to 4.5m. Accounting for Flood Areas)
- Work No. 2A Rosefield Substation Compound
- Work No. 2B Abnormal Indivisible Load Corridor
- Work No. 3A Satellite Collector Compounds
- Work No. 3B Satellite Collector Compound Transformer
- Work No. 4 Battery Energy Storage System (BESS)
- Work No. 5 Main Collector Compound
- Work No. 6 Grid Connection Cabling Corridor
- Work No. 7 Interconnecting Cabling Corridor (s)
- Work No. 8A Primary Temporary Construction and Decommissioning Compounds
- Work No. 8B Secondary Temporary Construction and Decommissioning Compounds
- Work No. 9 Highway Works
- Work No. 10A Green and Blue Infrastructure
- Work No. 10B Internal access to mitigation areas only

NOTES:

1. Refer to key plan for notes.

KEY PLAN:



01	SEPT 2025	DICO SUBMISSION	LDA	LDA	EDF
REVISION	DATE	DESCRIPTION	DRAWN	CHECKED	APPROVED

Rosefield Solar Farm

Rosefield
Solar Farm

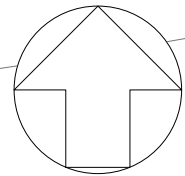
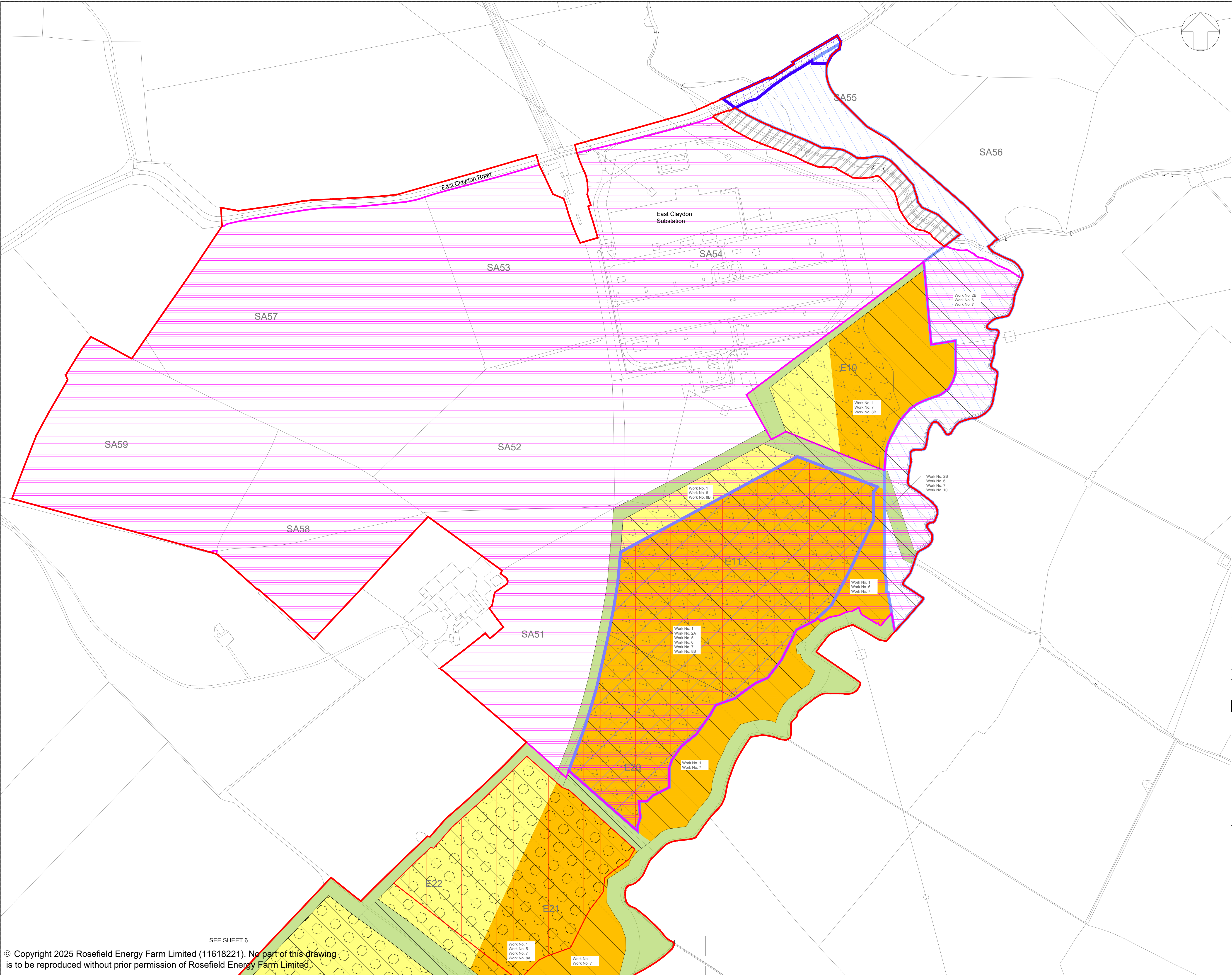
DOCUMENT:
**APPLICATION DRAWINGS
FOR APPROVAL**

REGULATION 5(2)(j)

DRAWING TITLE:
**WORKS PLANS
SHEET 6 OF 8**

PIN REFERENCE NUMBER: EN010158/APP/2.3	REVISION: 01	
DATE: SEPT 2025	DRAWN: LDA	SCALE: 1:2,500 at A1

SCALE BAR:
0 100m



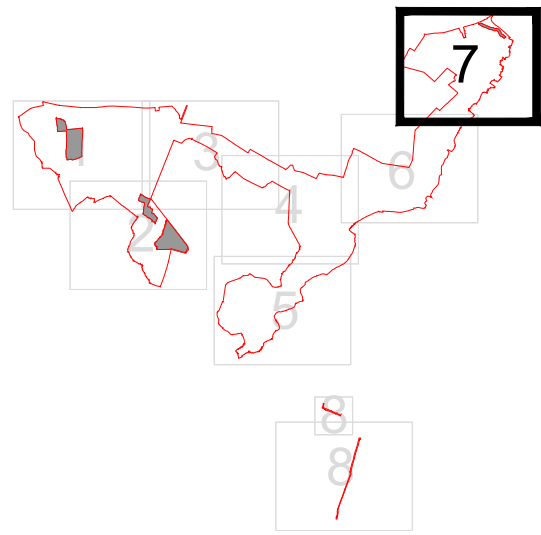
LEGEND:

- Order Limits
- Areas outside the Order Limits
- Work No. 1 Ground-mounted Solar PV Generating Station (Up to 3.5m)
- Work No. 1 Ground-mounted Solar PV Generating Station (Up to 4.5m. Accounting for Flood Areas)
- Work No. 2A Rosefield Substation Compound
- Work No. 2B Abnormal Indivisible Load Corridor
- Work No. 3A Satellite Collector Compounds
- Work No. 3B Satellite Collector Compound Transformer
- Work No. 4 Battery Energy Storage System (BESS)
- Work No. 5 Main Collector Compound
- Work No. 6 Grid Connection Cabling Corridor
- Work No. 7 Interconnecting Cabling Corridor (s)
- Work No. 8A Primary Temporary Construction and Decommissioning Compounds
- Work No. 8B Secondary Temporary Construction and Decommissioning Compounds
- Work No. 9 Highway Works
- Work No. 10A Green and Blue Infrastructure
- Work No. 10B Internal access to mitigation areas only

NOTES:

- Refer to key plan for notes.

KEY PLAN:



01	SEPT 2025	DICO SUBMISSION	LDA	LDA	EDF
REVISION	DATE	DESCRIPTION	DRAWN	CHECKED	APPROVED

Rosefield Solar Farm



DOCUMENT:
APPLICATION DRAWINGS
FOR APPROVAL

REGULATION 5(2)(j)

DRAWING TITLE:
WORKS PLANS
SHEET 7 OF 8

PIN REFERENCE NUMBER:
EN010158/APP/2.3

REVISION:
01

DATE:
SEPT 2025

DRAWN:
LDA

SCALE:
1:2,500 at A1

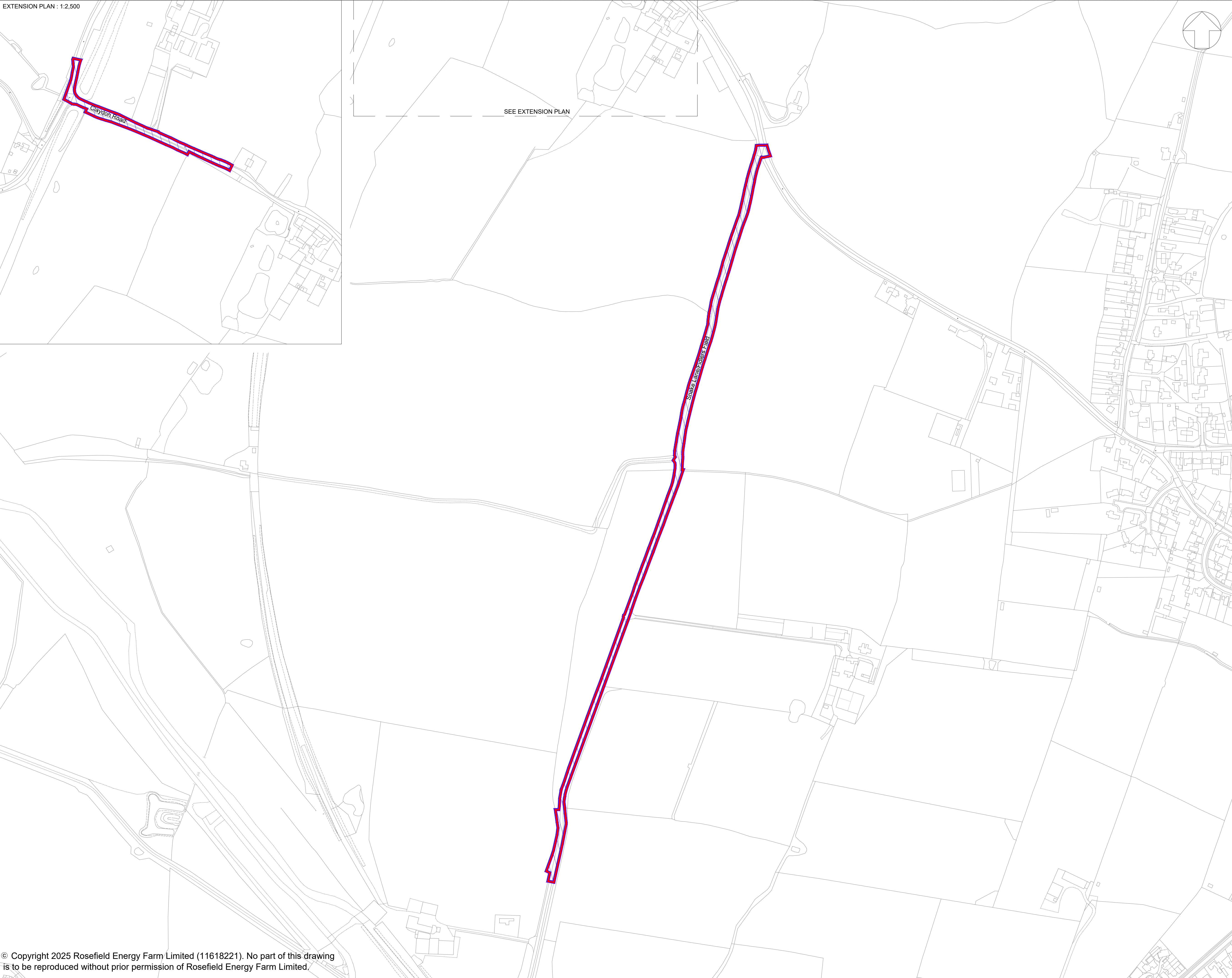
SCALE BAR:



© Copyright 2025 Rosefield Energy Farm Limited (11618221). No part of this drawing is to be reproduced without prior permission of Rosefield Energy Farm Limited.

This drawing may contain: Ordnance Survey material by permission of Ordnance Survey on behalf of the Controller of His Majesty's Stationery Office © Crown Copyright 2024. All rights reserved. Reference number 0100031673
OS Open data / © Natural England / © DEFRA / © DECC / © English Heritage. Aerial Photography - ESRI, DigitalGlobe, GEOEye, i-cubed, USDA FSA,USGD, AEX, Getmapping, Aerogrid, IGN,JGP,swisstopo, the GIS User Community

EXTENSION PLAN : 1:2,500



SEE EXTENSION PLAN

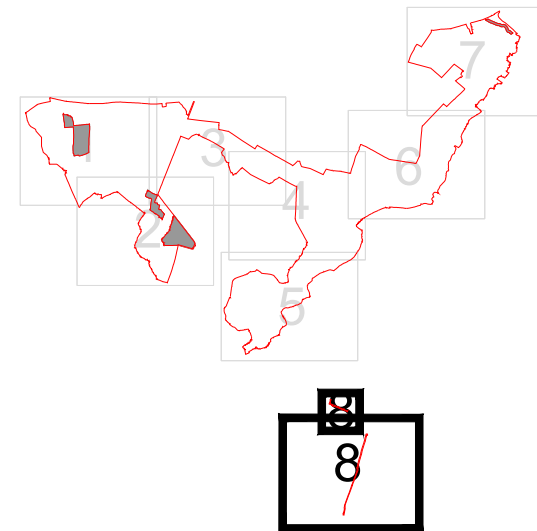
LEGEND:

- Order Limits
- Areas outside the Order Limits
- Work No. 1
Ground-mounted Solar PV Generating Station
(Up to 3.5m)
- Work No. 1
Ground-mounted Solar PV Generating Station
(Up to 4.5m. Accounting for Flood Areas)
- Work No. 2A
Rosefield Substation Compound
- Work No. 2B
Abnormal Indivisible Load Corridor
- Work No. 3A
Satellite Collector Compounds
- Work No. 3B
Satellite Collector Compound Transformer
- Work No. 4
Battery Energy Storage System (BESS)
- Work No. 5
Main Collector Compound
- Work No. 6
Grid Connection Cabling Corridor
- Work No. 7
Interconnecting Cabling Corridor (s)
- Work No. 8A
Primary Temporary Construction and
Decommissioning Compounds
- Work No. 8B
Secondary Temporary Construction and
Decommissioning Compounds
- Work No. 9
Highway Works
- Work No. 10A
Green and Blue Infrastructure
- Work No. 10B
Internal access to mitigation areas only

NOTES:

- Refer to key plan for notes.

KEY PLAN:



REVISION	DATE	DESCRIPTION	DRAWN	CHECKED	APPROVED
01	SEPT 2025	DICO SUBMISSION	LDA	LDA	EDF

Rosefield Solar Farm



DOCUMENT:
APPLICATION DRAWINGS
FOR APPROVAL

REGULATION 5(2)(j)

DRAWING TITLE:
WORKS PLANS
SHEET 8 OF 8

PIN REFERENCE NUMBER:
EN010158/APP/2.3

REVISION:
01

DATE:
SEPT 2025

DRAWN:
LDA

SCALE:
1:2,500 at A1

SCALE BAR:



© Copyright 2025 Rosefield Energy Farm Limited (11618221). No part of this drawing is to be reproduced without prior permission of Rosefield Energy Farm Limited.

This drawing may contain: Ordnance Survey material by permission of Ordnance Survey on behalf of the Controller of His Majesty's Stationery Office © Crown Copyright 2024. All rights reserved. Reference number 0100031673
OS Open data / © Natural England / © DEFRA / © DECC / © English Heritage. Aerial Photography - ESRI, DigitalGlobe, GEOEye, i-cubed, USDA FSA,USGD, AEX, Getmapping, Aerogrid, IGN,JGP,swisstopo, the GIS User Community

